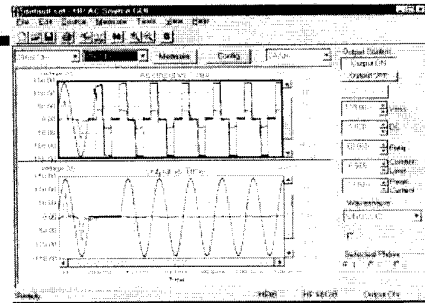




*Powerful Graphics  
Utility Included!*

**Increase Your Power Testing Capabilities with an AC power source with two built-in Precision Power Analyzers**



[www.hp.com/go/acsource](http://www.hp.com/go/acsource)

***What is this new solution?***

A programmable ac power source with two built-in precision power analyzers. Now you can accurately control ac mains power, dc power, and 400Hz power, while easily making tightly synchronized power measurements on the input and output of your device under test.

- AC Power generation and control (50/60Hz, 400Hz, up to 1000Hz)
- Generate accurate power disturbances like phase controlled dropouts
- Power measurements like Watts, VA, Power factor, THD, Frequency and more
- Precisely synchronized measurements between the input/output of your DUT
- Generate AM and FM modulated power waveforms
- Powerful Arbitrary waveform generator
- Specialized tests added for UPS testing (transfer time, phase-locked loop testing, and peak voltage measurement)
- Graphical User Interface included

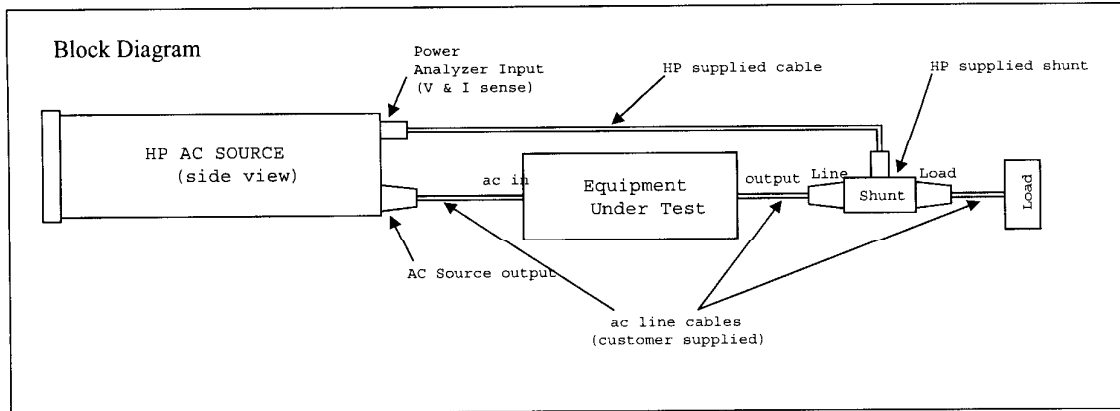
**HP SOLUTION: Option 020 for the HP AC power source, models HP 6811B, 6812B, and 6813B**

**Applications:**

- |                                     |                                    |
|-------------------------------------|------------------------------------|
| * Transformer design and test       | * UPS design and test              |
| * Power Conversion design and test: | * Avionics 400 Hz Power Conversion |
| ✓ ac to ac power supplies           | * Generate/measure Power Pulses    |
| ✓ ac to dc adapters/chargers        | * AC mains stimulus system         |
| ✓ ac to dc power supplies           | * Generate FM modulation           |
| ✓ dc to dc converters               | * Generate AM modulation           |
| ✓ dc to ac inverters                | * Phase-locked loop testing        |

**Spend your valuable time testing:**

This solution saves you time and money by making difficult tests easier, eliminates multiple pieces of expensive test equipment (which makes your test setup simpler), and allows you to spend more time testing.



### Specs-at-a-Glance

	6811B-020	6812B-020	6813B-020
<b>Power</b>	375 VA	750 VA	1750 VA
<b>Voltage (rms)</b>	300 V		
<b>Current (rms)</b>	3.25 A	6.5 A	13 A
<b>Current (peak)</b>	40 A	40 A	80 A
<b>Crest Factor</b>	12:1	6:1	6:1
<b>Frequency</b>	dc; 45 to 1000 Hz		
<b>Voltage dc</b>			
<b>Current dc</b>	2.5 A	5 A	10 A

Note: 2000VA model available, HP 6813B-022

#### Programming Accuracy:

ac Voltage	0.15% + 0.3 V
Frequency	0.01% + 10 uHz
dc Voltage	0.5% + 0.3 V

**Line Regulation:** 0.1% of full scale  
**Load Regulation:** 0.5% of full scale

**Ripple and noise:** -60 dB (rms relative to full scale)  
 300 mV (rms)

**Total Harmonic Distortion:** 0.25% (50/60Hz)

**Load Power Factor Capability:** 0 to 1

#### Extensive protection built-in:

Output disconnect relays, programmable peak and rms current limit, overvoltage, overcurrent and overpower

#### Additional Information:

1. For a complete set of spec's see the parent model Users Guide, [www.hp.com/go/manuals](http://www.hp.com/go/manuals)
2. Pricing and Delivery: Option 020 - \$3195, 2 to 4 weeks
3. To order, contact your local HP Sales Office, in the U.S. call 1-800-452-4844
4. Need more info? Using your own shunt? Send an e-mail to Dan Jaeger, [dan\\_jaeger@hp.com](mailto:dan_jaeger@hp.com)

#### Power Meter Functions:

Vrms, Vpeak, Irms, Ipeak, Frequency, Watts, VA, VAR, Power Factor, THD, Phase, V&I Harmonics

#### Measurement Ranges:

AC Voltage 0 to 300 Vrms  
 DC Voltage +/- 425 V  
 Current +/- 80 A peak (6813B)  
 +/- 8 A peak (6813B, low range)  
 13 A rms max continuous (6813B)

#### Average Measurement Resolution:

Voltage (rms) 10 mV  
 Current (rms) 2 mA

#### Measurement Accuracy:

Voltage (rms) 0.03% + 100 mV  
 Voltage (dc) 0.05% + 150 mV  
 Current (rms) 0.03% + 3 mA  
 VA 0.1% + 1.5 VA  
 Watts 0.1% + 0.3 W + 1.2mW/V  
 Power Factor 0.01  
 Frequency 0.05%

**Measurement Sample Time:** 25 us to 250 us (programmable)

**Measurement Channel Synchronization:** 100 ns

**Isolation Voltage:** 300 Vrms (to chassis ground)

#### Built-in HP-IB and RS-232 interfaces

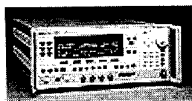
IEEE 488.2 Compatibility

VXI Plug&Play drivers available

3 Year Warranty

## Agilent 6813B technical specifications

Agilent 6813B



AC Power Source/Analyzer, 1750 VA

- [Sell](#)
- [Get a quote](#)
- [Get calibration](#)
- [Price guide](#)
- [Specs](#)
- [Stock photos](#)
- [Agilent 6813B data sheet \(PDF\)](#)
- [See other Power Analyzers & Monitors](#)

- [Buying used Agilent equipment with Agilent Advantage Assurance](#)
- [Selling used Agilent?](#)
- [Government and contractor GSA discounts](#)

### Agilent 6813B General Information

**Product Description:**  
AC Power Source/Analyzer, 1750 VA

### Agilent 6813B Performance Characteristics

Form Factor	Benchtop
Minimum Frequency	45 Hz
Maximum Frequency	1 kHz

### Agilent 6813B Measurements/Features

Crest Factor Measurement:No  
 DC Volts Measurement:Yes  
 Frequency Measurement:Yes  
 Line Regulation, Voltage:0.0003mV  
 Load Regulation, Voltage:0.0015mV  
 Maximum DC Current:10A  
 Maximum DC Volts:425V  
 No. of Outputs:1o/p  
 Number of Phases:1ph  
 Number of Ranges:1QTY  
 Output 1/Range 1 Max. Current:13A  
 Output1/Range1 Max Repetitive Peak Curre:80A  
 Output 1 Max. power:1750Watts  
 Overcurrent Protection:Yes  
 Over-temperature Protection:Yes  
 Overvoltage Protection:Yes  
 Power Factor Measurement:Yes  
 Power Measurement:Yes  
 RMS Current Measurement:Yes  
 RMS Volts Measurement:Yes  
 Total Harmonic Distortion:0.6243dB  
 Voltage Ripple and Noise:7.69230769230769E-11V

### Agilent 6813B Programmability/Connectivity

User Interface	Proprietary
Ports to Peripheral Devices	HPiB,RS232
Test Pattern Storage	16 Patterns
Programming Language	SCPI

### Agilent 6813B Compliance

CE Compliance	Compliant
UL Compliance	Compliant

### Agilent 6813B Power Requirements

Input Power	install jumper wire at desired voltage
-------------	--

### Agilent 6813B Physical Dimensions

Width	425.5 mm(16.75 in)
Height	132.6 mm(5.22 in)
Length	574.7 mm(22.62 in)

Weight

32.7 kg(72.09 lb)

**Agilent 6813B Standard Accessories**

1494-0059 /Accessory Slide Kit /Qty:1

**Agilent 6813B Options****US List Price**

001 / Harmonic and Flicker Emissions Test	\$3,000
002 / Voltage And Frequency Disturbances Immunity Test	\$1,250
003 / Interharmonics Immunity Test	\$2,000
009 / All 3 regulatory test software	\$5,265
019 / 2000 VA AC Power source/analyz	\$250
020 / Dual power analyzer option	\$3,195
022 / 2000VA AC Source w/dual power	\$3,445
0B0 / Delete Manual	No Charge
0BN / Extra Documentation	\$36
1BP / Military Standard 45662A Calibration with Test Data	\$306
1CM / Rackmount Kit	\$41
1CP / Rackmount and Handle Kit	\$92
200 / 174-106 Vac, 48-63 Hz	No Charge
831 / Line cord, 12 AWG, 200 to 240 Vac, unterminated	No Charge
832 / Line Cord, 4 mm <sup>2</sup> , unterminated	No Charge
834 / 10 AWG, 100-200Vac, line cord	No Charge
841 / Line cord with NEMA 6-20P, 20A 250 V Plug	\$15
842 / Line cord with IEC 309, 32A, 220V Plug	\$77
844 / Line cord with NEMA L6-30P, 30 A 250 V Locking Plug	\$56
AB0 / Taiwan - Chinese localization	No Charge
AB1 / Korea - Korean Localization	No Charge
AB2 / China - Chinese localization	No Charge
ABD / Germany - German Localization	No Charge
ABE / Spain - Spanish Localization	No Charge
ABF / France - French Localization	No Charge
ABJ / Japan - Japanese Localization	No Charge
ABZ / Italy - Italian Localization	No Charge
UK6 / Commercial Calibration Certificate With Test Data	\$131
W32 / 3 Years Return for Calibration Service	\$739
W34 / 3 year Customer Return Standard Compliance Calibration Service	\$907
W50 / 5 Year Customer Return Repair Service	\$310
W52 / 5 Years Return for Calibration Service	\$1,478
W54 / 5 Years Return for Calibration Service	\$1,814